



Highlights

>> Comprehensive Platforms for Telecommunications, Aerospace and Defense, and Commercial Applications

>> Up to 56 Ports Sync/Async

>> Advanced Remote Management via IP

>> RoHS Compliant

>> IPv6 Compliant

>> NexusWare® WAN Protocols:

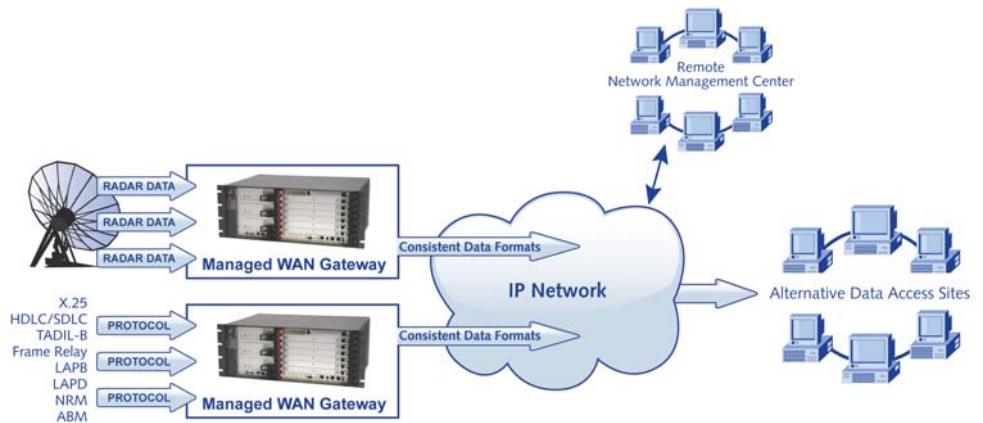
- Radar Receiver
 - CD-2
 - ASTERIX
 - NEC Radar Extractor
 - Raduga-2
- HDLC
 - ABM/LAPB
 - LAPD
 - NRM
 - SDLC
- X.25
- Frame Relay

>> Industry Standard Hardware and Software

>> Supports Module-Level Hot-Swap for Easy Maintenance

>> Common Spares for Increased Operating Efficiency

What used to require a full rack of equipment can now be accomplished by using a single Managed WAN Gateway (MWG). Based on industry-standard CompactPCI® architecture and Linux® software, the Managed WAN Gateway from Performance Technologies supports both module hot-swap and remote management of all major functions in a single chassis. This increases operating efficiency while also reducing the number of unique spares required. Remote management via Ethernet makes centralized system management a reality.



Managed WAN Gateway Solution

Remote Management

The MWG can be monitored and managed locally or remotely via Ethernet from any location by using Performance Technologies' Intelligent Shelf Manager (ISM). A highly programmable device, the ISM automatically monitors power, thermal, and operational conditions in the chassis, and reports chassis status both locally and to any selected remote monitoring locations. Additionally, the ISM provides Field Replaceable Unit (FRU) information, including serial number, hardware/software revision levels, and status for any module installed in the chassis. The ISM can power-cycle any individual slot or the entire chassis.

All management functions are controlled by a fully featured Graphical User Interphase (GUI) or via the Command Line Interphase (CLI). For an overview of the ISM's extensive capabilities, visit Performance Technologies' website (www.pt.com/ismtour).



Managed WAN Gateway

Product Overview

Ordering Information

- >> **PT-MWG48P-12253**
 - 4U Chassis
 - 48 Sync/Async Ports
 - Intelligent Shelf Manager
 - Built-in Two-port Ethernet Switch
 - Includes CPC5505 SBC with 1.6 GHz/1.8 GHz Intel® Pentium® M Processor
- >> **PT-MWG56P-12254**
 - 7U Chassis
 - 56 Sync/Async Ports
 - Dual Redundant Intelligent Shelf Manager Units
 - Dual Redundant Built-in Ethernet Switches with Four 1 Gb Ethernet Ports (2 per switch)
 - Includes CPC5505 SBC with 1.6 GHz/1.8 GHz Intel® Pentium® M processor
- >> **PT-MWG48PT-12255**
 - 4U Chassis
 - 48 Sync/Async Ports
 - Intelligent Shelf Manager
 - Built-in Ethernet Switch
 - Two 1 Gb Ethernet Ports
 - Can be synched to IRIG generator to supply time tags and data acknowledgements with microsecond accuracy

Software Options

- >> This product is available with a variety of software options. For more information, contact sales@pt.com.



Corporate Headquarters:
Performance Technologies
205 Indigo Creek Drive
Rochester, NY 14626

Tel: 585.256.0200
Fax: 585.256.0791
E-mail: sales@pt.com

www.pt.com

Communications Modules

At the heart of the system is the eight-port intelligent communications processor. Each communications processor includes eight serial ports, two Ethernet ports, and multiple WAN protocol stacks running onboard. As a CompactPCI module, replacement is done as a card swap (hot-swap) with no cabling changes required.

Hot-Swap

Should a communications module or power supply fail, a red "fail" LED will appear on the module, and the ISM will notify the system manager of its condition. A local technician can remove the failed module and replace it without powering down or even interrupting the remainder of the chassis' normal operation. The ISM will detect the replacement, initialize the new module, and place it back online automatically. In addition, the failed module's FRU information can be saved to aid in implementing repairs.

Speed and Reliability of IP

The Managed WAN Gateway acts as an IP server and allows data to be accessed from IP Ethernet clients by using Performance Technologies' powerful set of APIs that are available for Linux®, Windows®, and Solaris™ operating systems.

Through cost-effective and reliable transport over IP, client systems and workstations have remote access to this data. Users deploying Performance Technologies' APIs can collect and process data, archive, overlay, formulate response, send back, and other data commands. Furthermore, the gateway includes tools for logging, alarming, diagnosing, and troubleshooting such items as the shelf environment, power, and individual boards.

Performance Technologies provides a GUI for displaying all collected data, which can be accomplished remotely via Ethernet to the gateway. This extended shelf management combined with the redundant cooling, power, and hot-swap capabilities saves on systems maintenance and improves reliability and uptime.

Protocol Software

The MWG is fully compatible with NexusWare® WAN software. NexusWare WAN software products are offered as installable software packages for NexusWare Core (a comprehensive, highly integrated, Linux® development, integration, and management environment) or as turnkey packages for developers interested in the protocol package by itself. Whether the installable or turnkey solution is chosen, developers will be provided with a well-documented and powerful API to assist in the development process.

Communications processors can be configured with a complete set of protocol software installed. This includes HDLC, SDLC, x.25, Asynchronous Data Transfer, and a complete set of Radar Receiver Protocols for a wide variety of commercial systems and military radar systems. The Applications Programming Interface (API) is compatible with Windows®, Linux® and Solaris™ host systems.